



# Stenhøj Major

## 4-post electro-hydraulic lifts

Stenhøj's 4-post program comprises 2 basic lift series: Major 400 & Major 500. The Major lifts are especially suitable for service and inspection, repair of brakes, wheels, exhaust system, shock absorbers, transmission and differential. The Major lifts have capacities of 4 and 5.2 t respectively.

### Features:

Top safety

- eccentric brake system
- emergency stop valve
- automatic air-operated parking system

Elegant control box

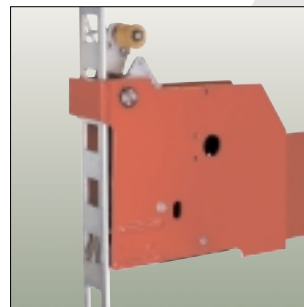
- 3 pushbuttons – up, down and parking
- placed in comfortable working height

Large program of optional extras, e.g

- scissor jacks with 2 and 2.6 t capacities
- lighting sets

Lifting height

- 1800 mm – optimum working height



## STENHØJ

KARMOT PTY LTD

Phone 02 9622 7388  
Fax 02 9622 3922

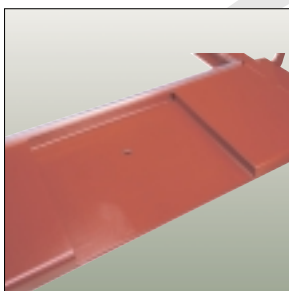
# Stenhøj Major



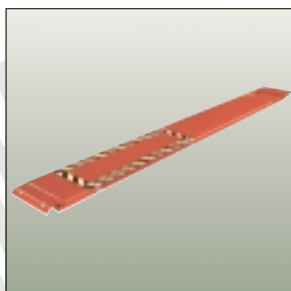
The Major program – advanced and flexible lifts.



The Major program lifts the entire range of small, medium-sized and large passenger cars as well as vans and small commercial vehicles.



B-versions are developed for front wheel alignment.



C-versions have front recesses and rear slip plates.



The Major program also comprises a special version with incorporated free-wheel lift – the Major Combi. Ask for separate brochure.



Moreover Stenhøj manufactures a special version for vehicle inspection with play detector in right platform. Ask for separate brochure.

## Long life construction

- the lowest operation and maintenance costs on the market

## Very low minimum height

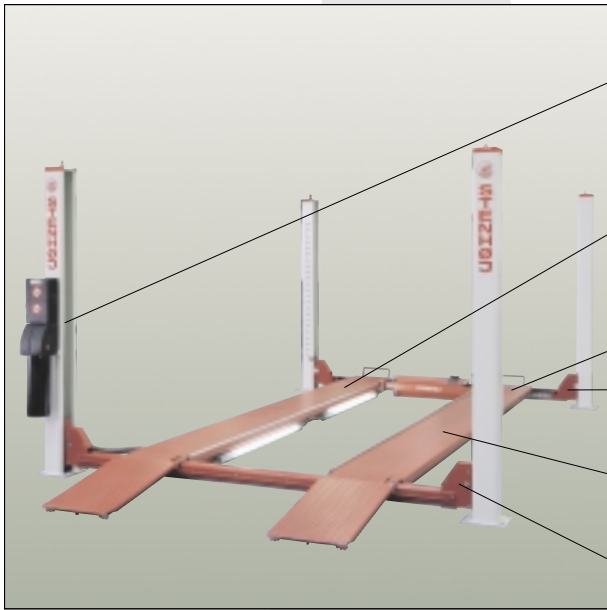
- easy access for cars with spoilers and skirts

## Major

- is like all other Stenhøj lifts CE-approved and TÜV-certified

## Extensive program

- All Major 400 and 500 lifts are available in A-versions (flush platforms) and B-versions (with front recesses)
- Major 426 and Major 430 are also available in C-versions (with front recesses and rear slip plates)
- All Major lifts are also available for recession in floor

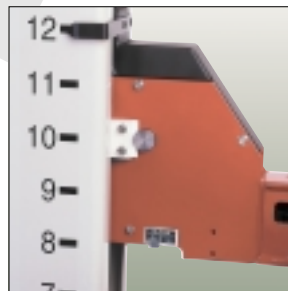


**Quality to the last detail**

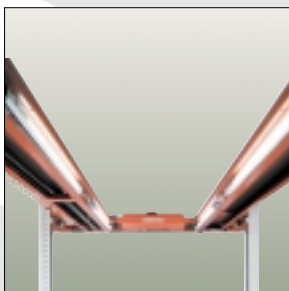
- pump unit with immersed motor placed on rear left post in 900 mm height - easy operation
- single-acting cylinder with hard-chrome plated and teflon-coated piston integrated in platform
- easy adjustment to relevant track width
- cast-iron cable pulleys and hardened axles
- stable, bent platforms with minimum deflection; suitable for wheel alignment
- certified cables with min. ultimate tensile strength of 92 kN



Bent profile platforms which prevent deflection. Delivery of all standard Major lifts includes a set of 15 mm aluminium guiding edges for scissor jacks. We offer 30 mm guiding edges as optional extras.



Delivery of all Major lifts includes a height indicator arrow, which helps to ensure that platforms and cross beams are totally level when the lift is parked.

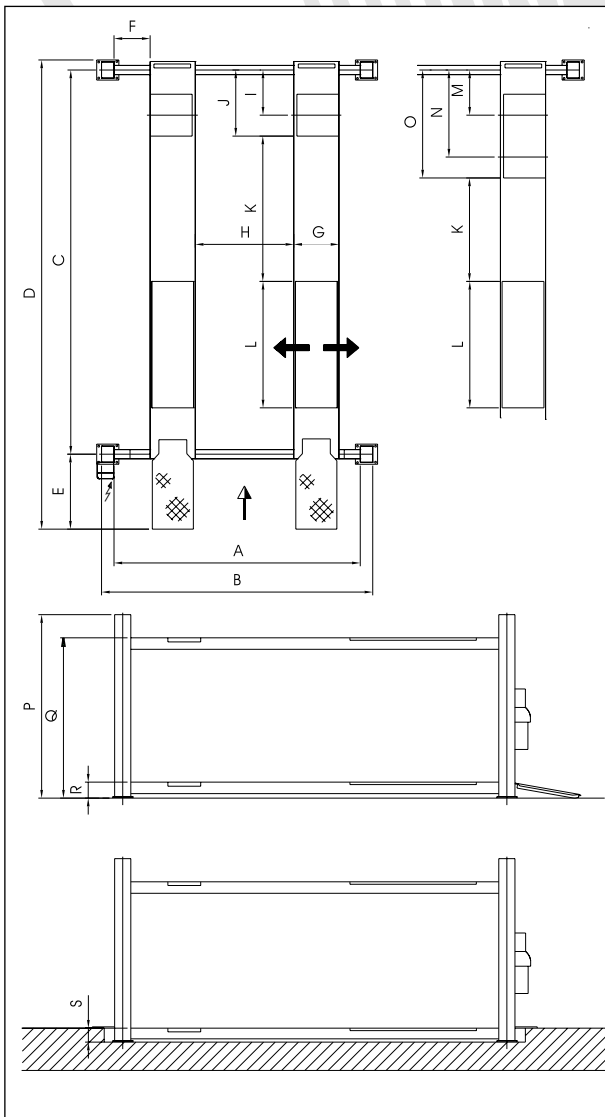


Stenhøj offers a large variety of optional extras for the Major lifts – e.g. lighting sets.



If longer ramps are required or alternatively recession in floor Stenhøj offers 1335 mm long ramps as well as drive-over ramps.

Model	A	B	C	D	E	F	G	H min./ max.	I	J	K	L	M	N	O	P	Q	R	S
Major 423A/B	2260	2564	4180	5216	913	200	450	810/ 963	650	905						2235	1800	170	170
Major 426 A/B	2600	2904	4180	5216	913	390	450	792/ 1114	650	905						2235	1800	170	170
Major 426C	2600	2904	4180	5216	913	345	500	786/ 1059	650	905	1450	1540				2235	1800	170	170
Major 430A/B	3000	3304	4680	5716	913	480	500	852/ 1324	550	805						2235	1800	170	170
Major 430C	3000	3304	4680	5716	913	480	500	852/ 1324			1540	1540	550	1060	1315	2235	1800	170	170
Major 430AL/BL	3000	3304	5100	6136	913	440	550	780/ 1200	550	805						2235	1800	195	195
Major 530A/B	3000	3304	4680	5716	913	440	550	780/ 1200	550	805						2235	1800	195	195
Major 530AL/BL	3000	3304	5100	6136	913	440	550	780/ 1200	550	805						2235	1800	195	195



Technical data:	The Major 400 series	The Major 500 series
Lifting capacity:	4000 kg	5200 kg
Lifting time:	22 sec.	22 sec.
Motor:	3 kW	3 kW
Min./max. pressure:	5/10 bar	5/10 bar

#### Optional extras:

Lighting sets, scissor jacks, drive-on/off ramps, extended drive-on ramps, drive-over ramps, 3rd platform for fork lift trucks, cover plates for B/C-versions.

#### Corrosion-proof surface treatment

All Stenhøj lifts are led through a sling purifying plant (according to SA2.50 – ISO-Norm 8501-1:1988), dipped in primer, and finally led through an electro-static powder bake plant.

#### Standard colours:

Red RAL 3013  
White RAL 9002  
Special colour combinations on request.

No liability accepted for specifications, which are subject to alteration.



# STENHØJ

KARMOT PTY LTD

Phone 02 9622 7388  
Fax 02 9622 3922